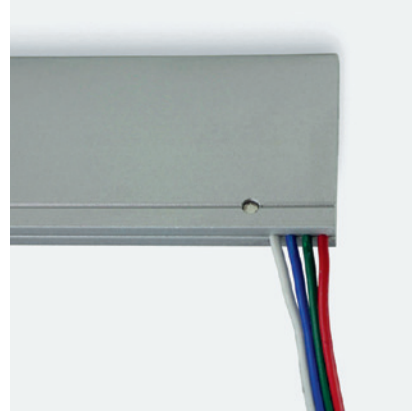




# GROOVE Light RGB Fixture Guide



Indoor/Outdoor | Recessed | RGB output

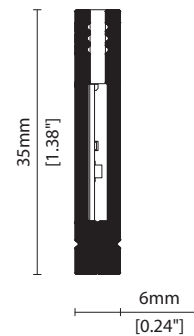


### Key applications

- ✓ Architectural detail
- ✓ Cabinet/Furniture
- ✓ Interior/Exterior
- ✓ Orientation lighting
- ✓ Special effect

### Key features

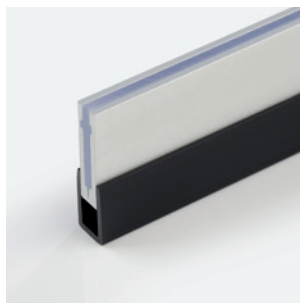
- ✓ Custom lengths
- ✓ Decorative
- ✓ Diffusion: Homogenous
- ✓ Direct view
- ✓ IP40
- ✓ IP65
- ✓ RGB
- ✓ Thin light line



### MOUNTING METHODS



KKCP-16 Clip



KKCH-01 PVC channel

Linear

# GROOVE Light RGB

## Specification sheet

# KKDÖ



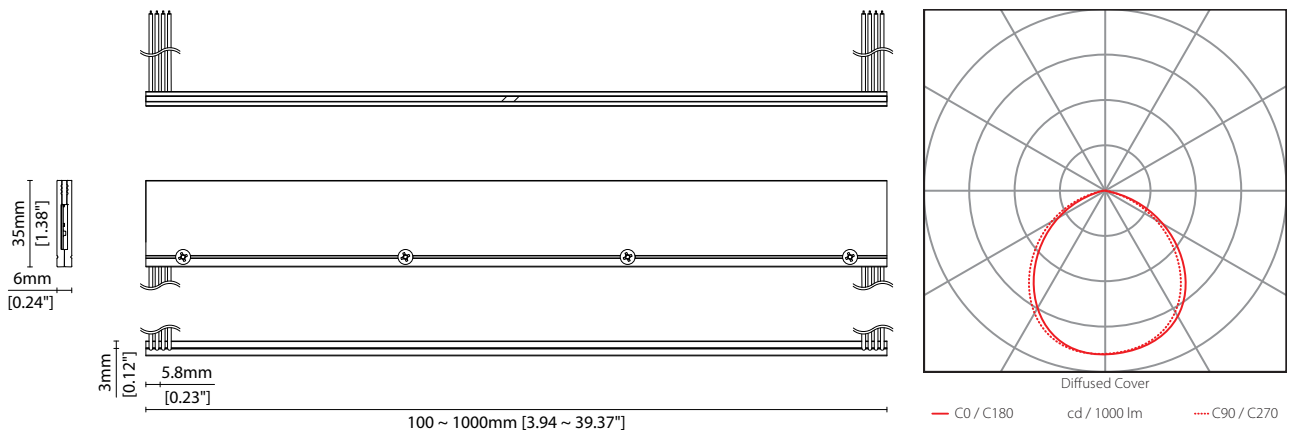
|                       |   |
|-----------------------|---|
| <b>Dimensions</b>     | H35/W6/L100-1000mm (H1.38/W0.24/L3.94-39.37in)  |
| <b>PCB Cut-point</b>  | 100mm increment/1000mm max (3.94in increment/39.37in max)   |
| <b>LED Pitch</b>      | -   |
| <b>Chip</b>           | RGB   |
| <b>Cover/Optics</b>   | 110° (Diffused Cover)   |
| <b>CCT</b>            | Red 621-633nm/Blue 465-475nm/Green 515-525nm  |
| <b>LED binning</b>    | 12nm tolerance  |
| <b>CRI</b>            | N/A   |
| <b>Lifetime</b>       | 20,000 hours @ 25°C (20,000 hours @ 77°F)   |
| <b>Operating temp</b> | $T_a = -25$ to $35^\circ\text{C}$ ( $T_c \text{ max} = 66^\circ\text{C}$ )<br>$T_a = -13$ to $95^\circ\text{F}$ ( $T_c \text{ max} = 150.8^\circ\text{F}$ ) |
| <b>IP Rating</b>      | IP40/IP65   |
| <b>Finish</b>         | Silver anodised   |
| <b>Mounting</b>       | Recessed mounting via clips or channel (no flange)  |
| <b>Power feed</b>     | Hardwire tails  |
| <b>Control</b>        | DMX/DALI  |



| Power consumption  | Supply voltage | Supply current     |
|--------------------|----------------|--------------------|
| 21.6W/m (6.58W/ft) | 24V DC         | 0.9A/m (0.274A/ft) |

### Diffused Cover

Red: 2lm/m (0.6lm/ft)  
Green: 10lm/m (3lm/ft)  
Blue: 3lm/m (1lm/ft)  
RGB: 15lm/m (5lm/ft)



Data derived from independent UKAS / IESNA LM-79-08 accredited testing of production samples.

See KKDÖ website for product document updates.

[www.kkdc.lighting](http://www.kkdc.lighting)

GROOVELightRGBS-03.04EN-20240112

Linear

# GROOVE Light RGB

## Code Table



### FIXTURE

| Model            | Finish                | Cover      | Grade | LED | Colour (CCT) | Length Availability <sup>1</sup>  | IP                 | Cable Length            | Power Feed <sup>2</sup>                                  | Input    |
|------------------|-----------------------|------------|-------|-----|--------------|---|--------------------|-------------------------|--|----------|
| GROOVE Light RGB | GQ Silver Anodised SA | Diffused C | s 101 | 101 | RGB RGB      | m 100-1000mm<br>100mm increments<br><br>i 3.94-39.37in<br>3.94in increments<br><br>(Specify length code<br>OR total run length) | IP40 40<br>IP65 65 | 300mm 0300<br>(11.81in) | Single no sheath tail S00X<br>Double no sheath tail D00X | DC 24V g |

<sup>1</sup> Refer to **Length Availability List** or enter total run length instead of length code

<sup>2</sup> Refer to **Power Feed Options** on **Options** pages

### Code Example:

|                  |   |                 |   |          |   |   |   |     |   |     |   |   |       |   |      |   |              |   |                       |   |        |
|------------------|---|-----------------|---|----------|---|---|---|-----|---|-----|---|---|-------|---|------|---|--------------|---|-----------------------|---|--------|
| GQ               | - | SA              | - | C        | - | s | - | 101 | - | RGB | - | m | 500   | - | 40   | - | 0300         | - | D00X                  | - | g      |
| GROOVE Light RGB |   | Silver Anodised |   | Diffused |   |   |   | 101 |   | RGB |   | m | 500mm |   | IP40 |   | 300mm/11.81" |   | Double no sheath tail |   | DC 24V |

### ACCESSORIES

#### Mounting Accessories

|         |             |
|---------|-------------|
| KKCP-16 | Clip        |
| KKCH-01 | PVC Channel |

\* Refer to **Mounting accessories** on **Accessories** pages

#### PSU/Driver

0-10V/1-10V/DALI/DMX

\* Refer to **Driver/PSU Options** page for details or provide requirement and KKDC to offer the suitable option

### LED ENGINE VARIANTS (LED STRIP TYPE)

| Luminaire               | LED        | Lumen/m   | Lumen/ft  | W/m         | W/ft        | Spec Doc                | Length                           | Increment             |
|-------------------------|------------|---|---|-------------|-------------|-------------------------|----------------------------------|-----------------------|
| GROOVE Light            | 104        | 24  | 7   | 12          | 3.65        | GROOVE Light            | 100-1000mm (3.94-39.37in)        | 100mm (3.94in)        |
| GROOVE Light IP67       | 104        | 40  | 12  | 12          | 3.65        | GROOVE Light IP67       | 100-1000mm (3.94-39.37in)        | 100mm (3.94in)        |
| <b>GROOVE Light RGB</b> | <b>101</b> | <b>Red 2<br/>Green 10<br/>Blue 3<br/>RGB 15</b> | <b>Red 0.6<br/>Green 3<br/>Blue 1<br/>RGB 5</b> | <b>21.6</b> | <b>6.58</b> | <b>GROOVE Light RGB</b> | <b>100-1000mm (3.94-39.37in)</b> | <b>100mm (3.94in)</b> |

\* Performance data: diffused cover, RGB

Linear

# GROOVE Light RGB

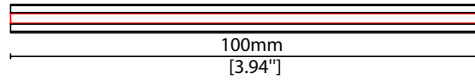
## Length Availability List



| Length Code |              | Fixture Length <sup>1</sup> |              | LED Strip <sup>2</sup> |              | End Cap Dimension |              | Wattage (W) | Output (lm) |    |   |    |
|-------------|--------------|-----------------------------|--------------|------------------------|--------------|-------------------|--------------|-------------|-------------|----|---|----|
| Metric      | Imperial(US) | Metric                      | Imperial(US) | Metric                 | Imperial(US) | Metric            | Imperial(US) |             | R           | G  | B | W  |
| m0100       | i0004        | 100mm                       | 3.94in       | 100mm                  | 3.94in       | N/A               | N/A          | 2.16        | 0           | 1  | 0 | 2  |
| m0200       | i0008        | 200mm                       | 7.87in       | 200mm                  | 7.87in       | N/A               | N/A          | 4.32        | 0           | 2  | 1 | 3  |
| m0300       | i0012        | 300mm                       | 11.81in      | 300mm                  | 11.81in      | N/A               | N/A          | 6.48        | 1           | 3  | 1 | 5  |
| m0400       | i0016        | 400mm                       | 15.75in      | 400mm                  | 15.75in      | N/A               | N/A          | 8.64        | 1           | 4  | 1 | 6  |
| m0500       | i0020        | 500mm                       | 19.69in      | 500mm                  | 19.69in      | N/A               | N/A          | 10.80       | 1           | 5  | 2 | 8  |
| m0600       | i0024        | 600mm                       | 23.62in      | 600mm                  | 23.62in      | N/A               | N/A          | 12.96       | 1           | 6  | 2 | 9  |
| m0700       | i0028        | 700mm                       | 27.56in      | 700mm                  | 27.56in      | N/A               | N/A          | 15.12       | 1           | 7  | 2 | 11 |
| m0800       | i0031        | 800mm                       | 31.50in      | 800mm                  | 31.50in      | N/A               | N/A          | 17.28       | 2           | 8  | 2 | 12 |
| m0900       | i0035        | 900mm                       | 35.43in      | 900mm                  | 35.43in      | N/A               | N/A          | 19.44       | 2           | 9  | 3 | 14 |
| m1000       | i0039        | 1000mm                      | 39.37in      | 1000mm                 | 39.37in      | N/A               | N/A          | 21.60       | 2           | 10 | 3 | 15 |

<sup>1</sup> Actual total overall length of light fixture (LED strip + end caps + void/wire hole)

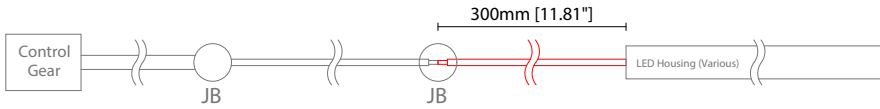
<sup>2</sup> Actual length of PCB strip



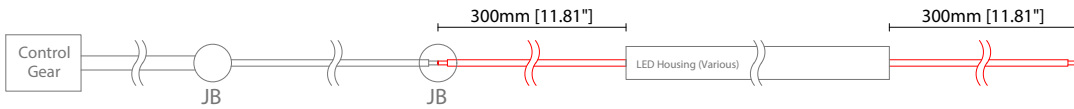
### POWER FEED OPTIONS

\* Options are an integral part of the fixture ordering codes. Please refer to **Code Table** pages.

#### 0300 S00X 300mm (11.81") Single no sheath tail



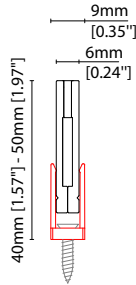
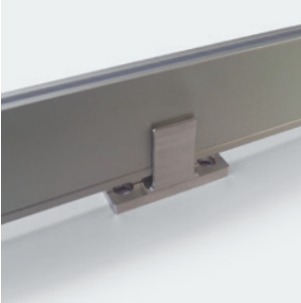
#### 0300 D00X 300mm (11.81") Double no sheath tail



#### Key

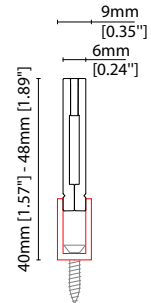
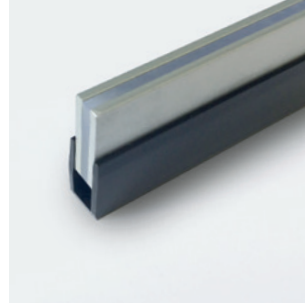
|              |   |
|--------------|---|
| Control Gear | Power supply, sub-controllers & control systems |
| JB           | Junction box / cable connection                 |

### MOUNTING ACCESSORIES



#### KKCP-16 (1no.)

Clip (allow 2 per metre/40in)  
Anodised aluminium finish  
W9/H40-50mm (W0.35/H1.57-1.97")



#### KKCH-01 \*

PVC channel (minimum 200mm (7.87in) PVC channel per 500mm (19.69in) of GROOVE Light)  
Black PVC finish

W9/H40-48mm (W0.35/H1.57-1.89")

\* Specify length of channel in 1000mm (39.37in) increments (to be cut on site further as required)

### KKDC CONTROL



IP20  
Plastic housing  
L170/W59/H29mm  
(L6.69/W2.32/H1.14in)

#### KKDM-06 1-10V

visDIM dimmable sub-controller  
(4 x 8A max @ 12-36V)



IP20  
Plastic housing  
L170/W53.4/H28mm  
(L6.69/W2.10/H1.10in)

#### KKSC-05 DMX

visDIM dimmable sub-controller  
(4 x 5A max @ 12-36V)



IP20  
Plastic housing  
L170/W59/H29mm  
(L6.69/W2.32/H1.14in)

#### KKDL-02 DALI

visDIM dimmable sub-controller  
(4 x 8A max @ 12-36V)



IP20  
Plastic housing  
L166/W53.4/H23mm  
(L6.54/W2.10/H0.91in)

#### KKDL-03 DALI

visDIM dimmable sub-controller  
(4 x 5A max @ 12-36V)

### AVAILABLE PSU OPTIONS

| Control Mode  | PSU (Order Code) | Input Voltage AC | Output Voltage DC | Rated Output Current | Rated Power | Dim %             | IP Rating |
|---------------|------------------|------------------|-------------------|----------------------|-------------|-------------------|-----------|
| Switched      | CEN-60-24        | 90-295V          | 24V               | 2.5A                 | 60W         | -                 | IP67      |
|               | HLG-60H-24       | 90-305V          | 24V               | 2.5A                 | 60W         | -                 | IP67      |
|               | HLG-100H-24      | 90-305V          | 24V               | 4.0A                 | 100W        | -                 | IP67      |
|               | HLG-150H-24      | 90-305V          | 24V               | 6.3A                 | 150W        | -                 | IP67      |
|               | HLG-240H-24      | 90-305V          | 24V               | 10A                  | 240W        | -                 | IP67      |
| 0-10V (1-10V) | PWM-40-24        | 90-305V          | 24V               | 1.67A                | 40W         | 100-0.15 (100-10) | IP67      |
|               | PWM-60-24        | 90-305V          | 24V               | 2.5A                 | 60W         | 100-0.15 (100-10) | IP67      |
|               | PWM-90-24        | 90-305V          | 24V               | 3.67A                | 90W         | 100-0.15 (100-10) | IP67      |
|               | PWM-120-24       | 90-305V          | 24V               | 5.0A                 | 120W        | 100-0.15 (100-10) | IP67      |
| DALI          | LIN100A1         | 120-277V         | 24V               | 1A per channel       | 100W        | 100-0.1           | IP66/IP40 |
| DMX RGB       | LIN100A1         | 120-277V         | 24V               | 1.33A per channel    | 100W        | 100-0.1           | IP66/IP40 |
| DMX RGBW      | LIN100A1         | 120-277A         | 24V               | 1A per channel       | 100W        | 100-0.1           | IP66/IP40 |

### Flicker Free Options - Combination of PSU+ sub-controller

| Control Mode   | PSU (Order Code) | Sub-controller (Order Code) | Input Voltage AC | Output Voltage DC | Rated Output Current | Rated Power | Dim %   | IP Rating PSU/ Sub-controller |
|----------------|------------------|-----------------------------|------------------|-------------------|----------------------|-------------|---------|-------------------------------|
| 0-10V or 1-10V | CEN-60-24        | KKDM-06                     | 90-295V          | 24V               | 2.5A                 | 60W         | 100-0.9 | IP67/IP20                     |
|                | HLG-60H-24       | KKDM-06                     | 90-295V          | 24V               | 2.5A                 | 60W         | 100-0.9 | IP67/IP20                     |
|                | HLG-100H-24      | KKDM-06                     | 90-295V          | 24V               | 4.0A                 | 100W        | 100-0.9 | IP67/IP20                     |
|                | HLG-150H-24      | KKDM-06                     | 90-295V          | 24V               | 6.3A                 | 150W        | 100-0.9 | IP67/IP20                     |
|                | HLG-240H-24      | KKDM-06                     | 90-295V          | 24V               | 10.0A                | 240W        | 100-0.9 | IP67/IP20                     |
| DALI           | CEN-60-24        | KKDL-02/03                  | 90-295V          | 24V               | 2.5A                 | 60W         | 100-0.1 | IP67/IP20                     |
|                | HLG-60H-24       | KKDL-02/03                  | 90-305V          | 24V               | 2.5A                 | 60W         | 100-0.1 | IP67/IP20                     |
|                | HLG-100H-24      | KKDL-02/03                  | 90-305V          | 24V               | 4.0A                 | 100W        | 100-0.1 | IP67/IP20                     |
|                | HLG-150H-24      | KKDL-02/03                  | 90-305V          | 24V               | 6.3A                 | 150W        | 100-0.1 | IP67/IP20                     |
|                | HLG-240H-24      | KKDL-02/03                  | 90-305V          | 24V               | 10.0A                | 240W        | 100-0.1 | IP67/IP20                     |
| DMX RGB        | CEN-60-24        | KKSC-05                     | 90-295V          | 24V               | 2.5A                 | 60W         | 100-0.9 | IP67/IP20                     |
|                | HLG-60H-24       | KKSC-05                     | 90-305V          | 24V               | 2.5A                 | 60W         | 100-0.9 | IP67/IP20                     |
|                | HLG-100H-24      | KKSC-05                     | 90-305V          | 24V               | 4A                   | 100W        | 100-0.9 | IP67/IP20                     |
|                | HLG-150H-24      | KKSC-05                     | 90-305V          | 24V               | 6.3A                 | 150W        | 100-0.9 | IP67/IP20                     |
|                | HLG-240H-24      | KKSC-05                     | 90-305V          | 24V               | 10.0A                | 240W        | 100-0.9 | IP67/IP20                     |

<sup>1</sup> The items shown above cover the most frequently used specification but does not exhaust the possible options

<sup>2</sup> PSU and/or driver can be chosen from the table, or KKDC may recommend the best option upon receipt of the controls requirement and installation environment

<sup>3</sup> Electrical shop drawing will include detailed information of PSU and relevant control drivers

<sup>4</sup> Cut sheets are available on the controls section of [www.kkdc.lighting](http://www.kkdc.lighting) or upon request